

**RESERVATION RIGHTS:**

*The Missoula Public Art Committee is designated to review, advocate and develop public art projects in the City of Missoula. Since 1985, it has strived to develop a formal structure in which to create, develop and maintain public art as well as further public accessibility to the arts.*

*All eligible applicants regardless of race, color, religion, creed, political ideas, sex, age, marital status, physical or mental disability, national origin, familial status, sexual orientation, gender identity or gender expression. If you are unsure about eligibility, contact the City of Missoula before applying.*

*The City of Missoula Public Art Committee reserves the right at any time to supplement, amend or otherwise modify this solicitation and to request additional or supplemental information or proposals from any or all participating artists. In addition, the City reserves the right to accept or reject, at any time prior to the commissioning of a work, any or all proposals or any part thereof submitted in connection with this solicitation; to waive any defect or technicality; and to advertise for new proposals where the acceptance, rejection waiver, or advertisement would be in the best interests of the City. The City also reserves the right to negotiate unacceptable provisions incorporated within an otherwise acceptable proposal. A proposal which is incomplete, unclear, conditional or which contains irregularities of any kind, may be rejected without evaluation.*

*Failure to comply with proposal requirements described in the prospectus will constitute an invalid application.*

*\*All City of Missoula Public Art Committee members must be in adherence of bylaws.*

**Information & Questions:**  
**Becca MacLean, Public Art Coordinator**  
[becca@artsmissoula.org](mailto:becca@artsmissoula.org)  
**(406)-541-0860**

# Montana Rail Link Park

A City of Missoula Percent for Art Public Art Project

2018

**SUBMITTAL DEADLINE:**  
**Friday, September 21st, 2018 @ 5pm**

**View Art Call at:**

<http://www.missoulapublicart.org/public-art-calls/> **AND**  
<http://www.ci.missoula.mt.us/Bids.aspx?CatID=33>

**Submit to:**

<https://cityofmissoulapublicartcommittee.submittable.com/submit>

**The City of Missoula Public Art Committee, in collaboration with Missoula Redevelopment Agency and the City of Missoula seek an artist or art team to create and submit an original completed artwork or design proposal for a major integrated public art piece in Montana Rail Link Park in Missoula, Montana. This is a percent for art call open invitation to artists in Montana, Washington State, Idaho and Oregon.**

## **THE PROJECT**

The City of Missoula Public Art Committee, in collaboration with Missoula Redevelopment Agency and the City of Missoula, seek an artist or artist team to create an integrated artwork for the newly constructed Montana Rail Link Park.

## **THE CITY OF MISSOULA PUBLIC ART COMMITTEE**

Established in 1985 by Mayor John Toole and reaffirmed as a standing committee in 2002, The City of Missoula Public Art Committee endeavors to develop a collection of public art that is the highest quality, that encompasses a broad aesthetic range reflecting the City and the minds of its citizens, improves the quality of life in the area, is accessible to all individuals, and is a source of pride to all residents.

The Committee reviews permanent works of art proposed on, in or over City owned property. To that end, the Committee is honored to request your participation in this invitation. Public art serves as a visual landmark within the built environment and, most importantly, an expression of our community. Public Art provides inspiration to all Missoulians and visitors as a means to appreciate artwork outside of the traditional museum or gallery setting and within the public realm.

Missoula Percent for Art Projects are site specific, legacy works that engage a variety of media - mosaic, painting, glass, sculpture, and works that integrate landscape, infrastructure, and architecture. This commission challenges artists to reflect the diversity of the Missoula community, and integrate and enhance the site and public space.

## **BUDGET**

**The total budget established for this project is \$25,000.** This project was funded with \$12,500 resulting from the City of Missoula's Percent for Art funds generated from the construction of Montana Rail Link Park. Also, a \$12,500 match generously given by Missoula Redevelopment Agency. The budget includes (but is not limited to): artist fees, design costs, engineering fees, fabrication, installation, photography, insurance, and all taxes. Travel to Missoula and/or accommodations are at the artist's expense.

The finalist's budget should include detailed specifications of materials, coatings, labor, etc.

## **LOCATION & HISTORY**

Last year the City purchased a 12-acre parcel of land bounded by Johnson Street on the west, the Bitterroot Branch Railroad on the east and North and South Avenues on the north and south, from Montana Rail Link (MRL). The Department of Parks and Recreation contributed nearly \$390,000 from the 1995 open space revenue bonds toward the purchase price, and the remainder of the purchase was financed with URD III TIF Revenue Bonds. The purchase price was \$2 million, which was considerably below market price. The difference between the purchase price and the fair market value represent a substantial donation from MRL to the community.

This property purchase allows design and construction of the final link in the Bitterroot Branch Trail, and construction of a much-needed neighborhood park in the Franklin to the Fort and Southgate Triangle neighborhoods. Construction of the trail has begun and is

expected to be complete by early June. The neighborhood park, which will be named Montana Rail Link Park, will be located on approximately 4.5 acres at the southern end of the site. Staff from MRA and Parks and Recreation worked collaboratively to establish a design for the park, through a rigorous public input process. Public input was synthesized into a single master plan, which was the basis for the park design that is being developed.

## **PROJECT GOALS**

The selected artist will create an original artwork to be placed in Montana Rail Link Park. The artwork to be selected will be located in a vibrant, bustling park space, and experienced by visitors relaxing or recreating via foot or bike. Also, visitors may experience this piece quickly when driving by the park. The Missoula Public Art Committee expects the piece to be an iconic and enduring landmark of the highest quality in both execution and concept. The commissioned work can be in any durable medium. The City of Missoula Public Art Committee encourages proposals that balance the artistic design in the art work with the setting, history or theme of the MRL park. Though well-integrated into the park, the art piece should be very legible as an autonomous artistic intervention into the landscape. At the same time, the artwork must permit the uses and functions of the park's larger context. Artwork must be safe, durable and low-maintenance in the Missoula climate and park environment.

Following approval of an art concept, the selected artist will continue on with design development and implementation of the artwork.

## ARTWORK OPTIONS

The committee will consider two options:

- A detailed proposal for a new work designed by the artist that meets the stated projects goals.
- A proposal for the purchase of an existing artwork that also fully meets the stated project goals.

## SELECTION PROCESS

### PHASE I

**Note – Late or Incomplete Applications will not be considered.**

The City of Missoula Public Art Committee encourages and welcomes all qualified artists to submit. Qualified artists are defined as having specialized training in the field or a history of having exhibitions as an artist and who are recognized as an artist by peers and art professionals.

To be considered, artists must submit the application via the Missoula Public Art Committee's Submittable website:  
<https://cityofmissoulapublicartcommittee.submittable.com/submit>

## APPLICATION INFORMATION

1. **Proposal Description/Artist Statement** explaining the artist's concept, design and approach to the project along with drawing, digital image, model that is clearly indicative for the final artwork.
2. **Artist must submit five images** illustrating strong examples of work appropriate to the project (existing work).

3. **Though not required, the Committee prefers applicants with public art experience** and the proven ability to complete substantial commissions. The images submitted should reflect this ability.
4. **If the artist is presenting proposals that include existing artwork**, please also furnish images of the artwork from multiple viewpoints.
5. **Label each image** with name, title, size, installation location if appropriate, and numbered to correspond with an attached annotated list.
6. **Please do not include website addresses or links** directing the selection committee to examples of your work. Please select and present to the committee the five works which best illustrate your abilities.
7. **Current resume** detailing your experience as an artist and any past public art projects.
8. **Professional References:** Please list two individuals who can speak to your public art experience and/or commissioned art experience and/or can speak to your artistic capabilities.

## SUBMISSION CRITERIA

1. Proposals for new works must include a scaled detailed drawing, model or digital image that is clearly indicative of the final artwork. Proposals for existing works must include details of size, weight, materials, installation requirements, and a discussion of why

the artwork is appropriate for the art call's space.

2. Durable exterior materials such as paint, ceramic, metal, stone, will be considered. However, maintenance free work consisting of robust and durable materials, suitable to Missoula's climate is preferred. The piece should be structurally sound and may require that a structural engineer review/stamp off on the construction and installation documents. City of Missoula will review final details.
3. Artists must indicate a sound strategy for installing artwork into the park. Installation activities must have minimal impact on site disturbance and park activities.
4. Artists must indicate a proposed strategy for where the art piece meets the ground that minimizes routine parks maintenance around the piece.
5. Artistic excellence and innovation.
6. Ability to create quality artwork appropriate in concept, materials and scale for the project.
7. Demonstrated adherence to schedules, deadlines, project requirements and budgets.
8. Experience working efficiently, collegially and collaboratively with design professionals and civic agencies in design and execution.
9. Availability for the finalist interview in September 2018.
10. Availability to design work in Summer/Fall 2018 and Install in Summer 2019.

A selection committee consisting of members of the City of Missoula Public Art committee along with representatives of Missoula Redevelopment Agency, Neighborhoods, Montana Rail Link Park Design Team, Parks & Recreation, etc. will review all submissions. From this review and based on the criteria listed, a short list of artists will be recommended to be contracted to create concept proposals.

## **PHASE II**

Finalists will be offered a design fee of \$150 to develop their concepts in detail. Finalists will make a personal presentation to the selection committee on their concept and answer questions. The selection committee will recommend one proposal be commissioned. **The Winning Artist will be announced Friday, November 16<sup>th</sup>, 2018.** All participants will be notified of the selection. A standard public art contract will be executed thereafter between the artist and the City of Missoula. The selection committee will work with the artist on a completion date, with the goal of Summer 2019 installation.

## **THE PROJECT: SITE SPECIFICATION**

This project involves the direct commission of artwork for Montana Rail Link Park in Missoula, Montana. There are three suggested locations provided by the City of Missoula Public Art Committee. Artists may use one or all of the locations:

**Site #1: Site number one is located in a grass area in the center of the west end of the park**

**along Johnson Street. The art in this location will need to be placed within a 20ft by 20ft footprint (See Map Below).**

**Site #2: Site Number two is located in a grass area in the northwest area of the park. It is close to the Community Gardens and borders the restroom and picnic shelter. The art in this location will need to be placed within a 20ft by 20ft footprint (See Map Below).**

**Site #3: Location of Artist's choosing, with approval of City entities involved.**

Artists may consider a different site within the park (see non-pink & non-blue, unshaded areas on map; pg. 6)\*. Limitations are to avoid placing something in the open green lawn space, the playground, park plaza, community garden and other off-limits spaces designated by the design team. Images of location spaces and off limits areas are below. Artists must explicitly explain their rationale behind choosing an alternate site within their proposal.

## **TIMELINE**

**Submissions Due via Submittable:**  
Friday, September 21st, 2018 at 5pm

**Selection Committee Review:**  
September 24<sup>th</sup>-28<sup>th</sup>, 2018

**Finalists Announced:**  
Monday, October 1<sup>st</sup>, 2018

**Finalists develop Scale Model for Interview:**  
Tuesday, October 2<sup>nd</sup> – Friday, November 9<sup>th</sup>, 2018

## **Selection Committee Interview Finalists:**

Monday, November 12<sup>th</sup> – Wednesday, November 14<sup>th</sup>, 2018

## **Commission Awarded:**

Friday, November 16<sup>th</sup>, 2018

## **Preferred Deadline for Installation:**

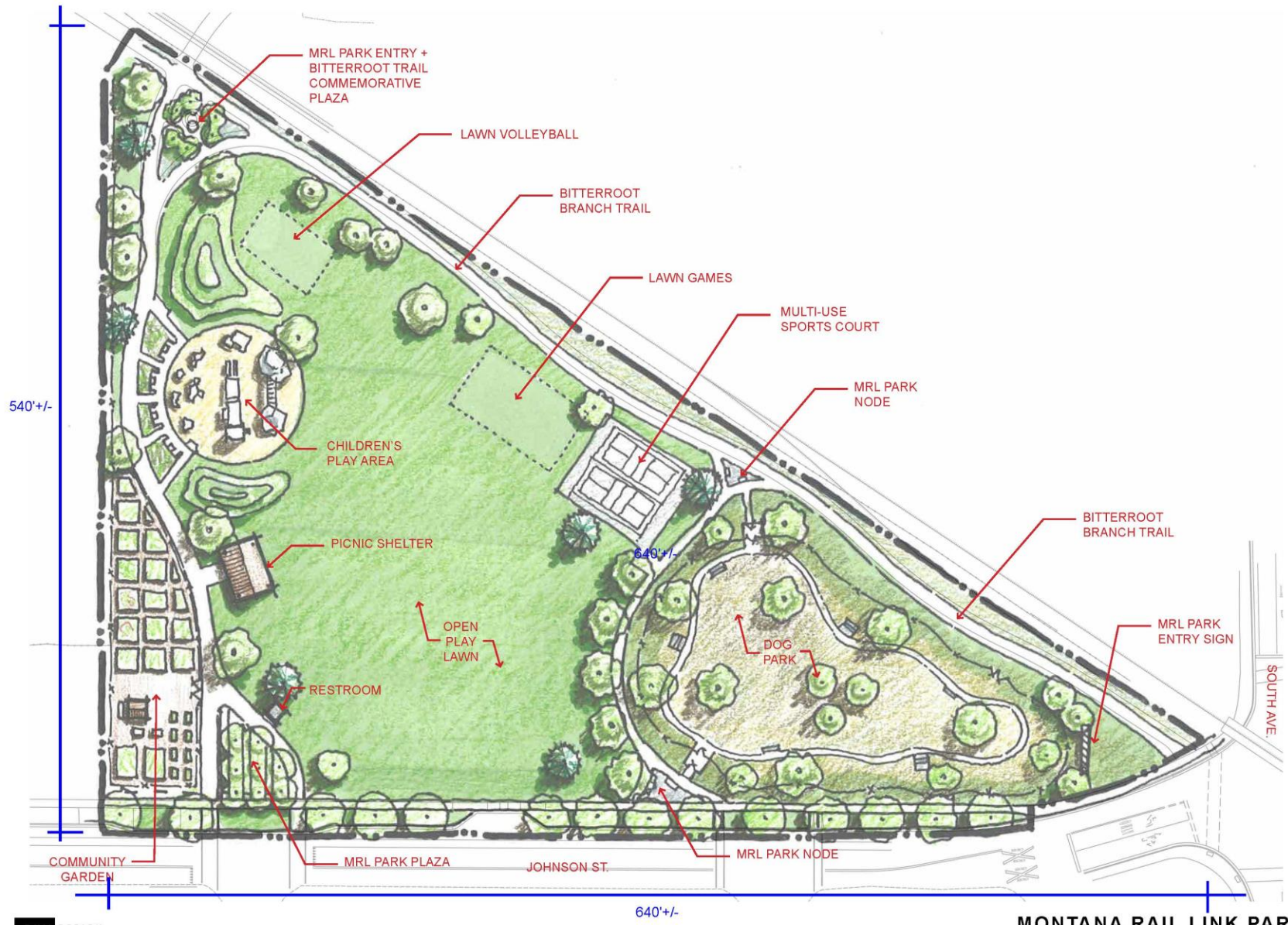
Summer 2019. The exact date will be scheduled between the artist, the City of Missoula Public Art Committee and a City of Missoula representative.

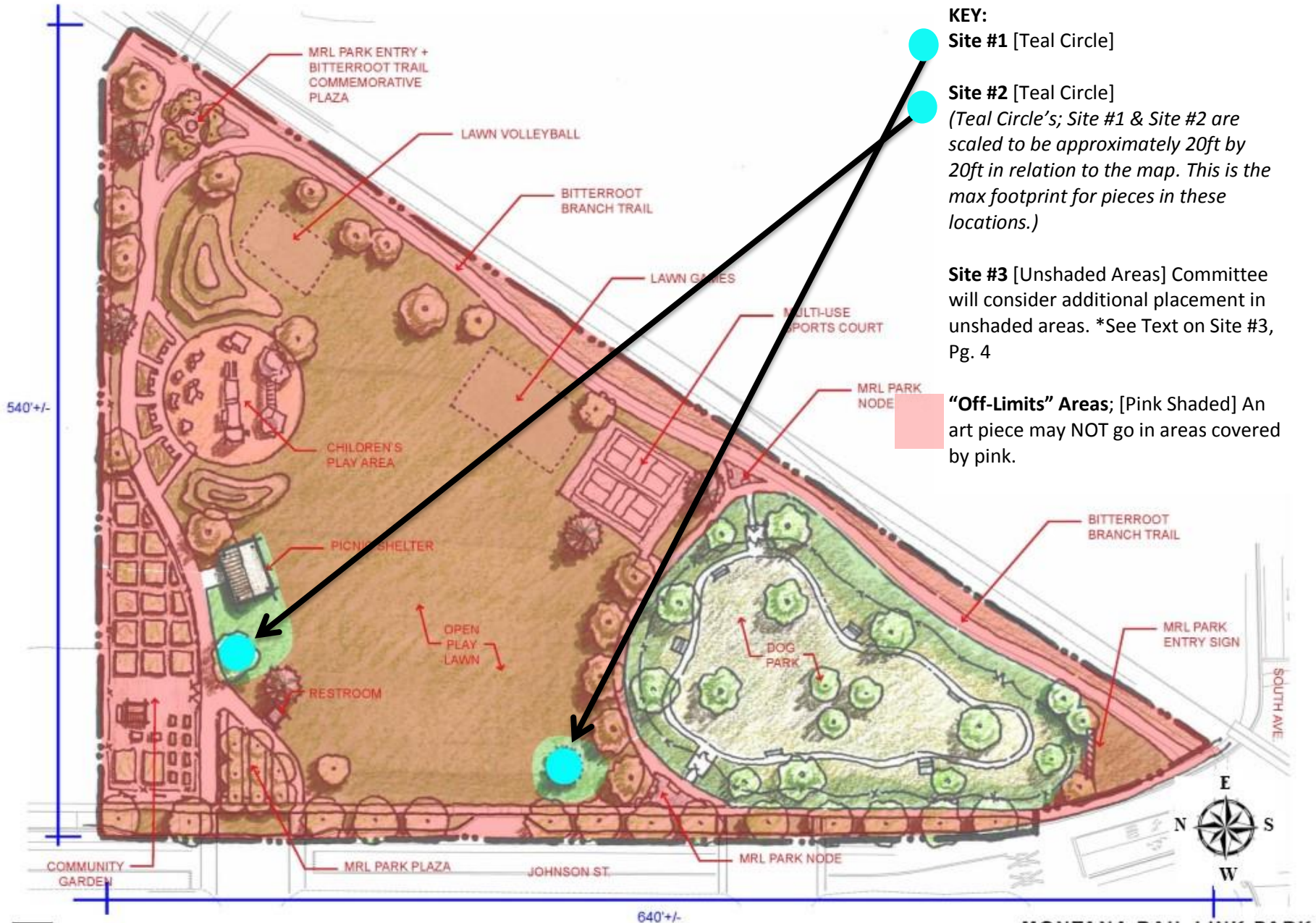
## **ATTACHED IMAGES**

Images below are as follows:

1. Labeled Map of Montana Rail Link Park
2. Map of Montana Rail Link Park with site locations/off-limits locations marked.
3. Examples of additional Montana Rail Link Relics that are being entered into the park, and the key to explain their location.
4. Drawings/Design Images of the Community Garden, Playground and MRL Park entrance for your understanding/inspiration.

If you would like PDF copies of any of these images or need additional information please email [Becca@artsmissoula.org](mailto:Becca@artsmissoula.org).





**KEY:**

**Site #1 [Teal Circle]**

**Site #2 [Teal Circle]**

*(Teal Circle's; Site #1 & Site #2 are scaled to be approximately 20ft by 20ft in relation to the map. This is the max footprint for pieces in these locations.)*

**Site #3 [Unshaded Areas]** Committee will consider additional placement in unshaded areas. \*See Text on Site #3, Pg. 4

**"Off-Limits" Areas; [Pink Shaded]** An art piece may NOT go in areas covered by pink.



1. RAIL ARTIFACT  
3/12/18 UPDATE: ARTIFACT TO BE SIM. #5  
(DIFFERENT SIGN SHAPE/STYLE)



2. SIGNAL BUNGALOW



3. BUFFER STOP



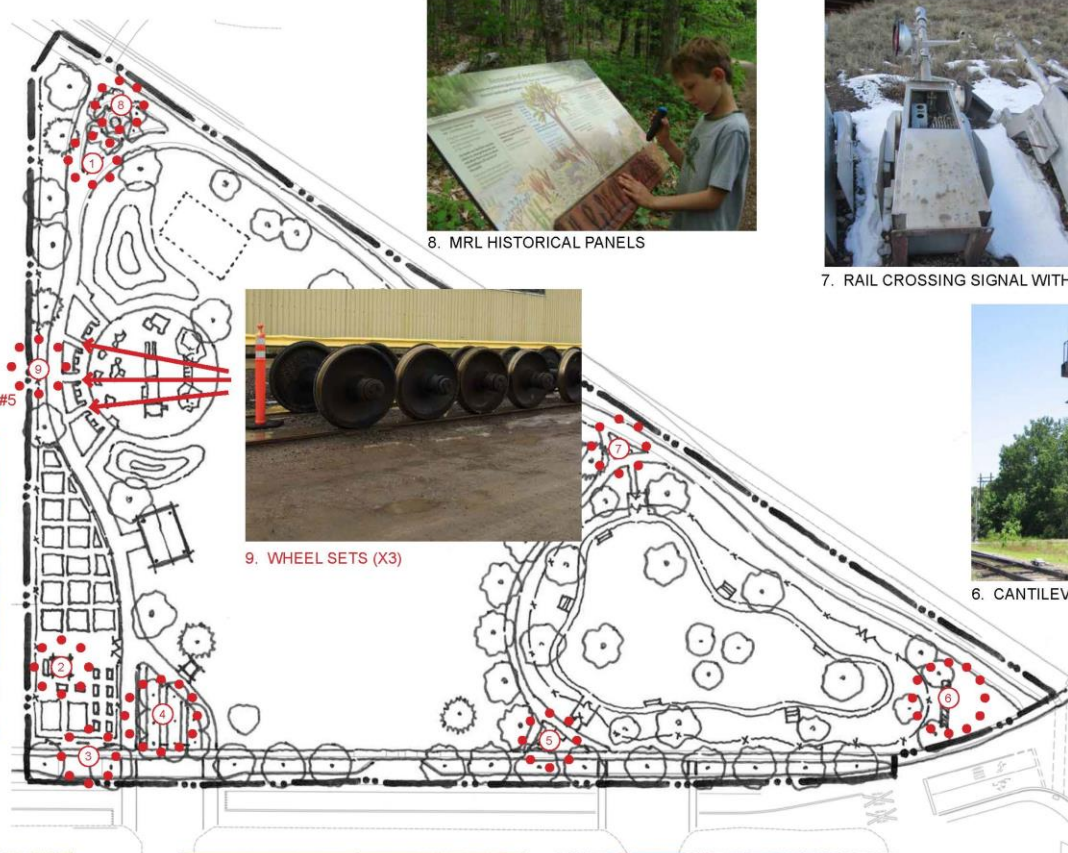
4. TRACK CART



4. RAIL TRACKS



5. RAIL SWITCH STAND



8. MRL HISTORICAL PANELS



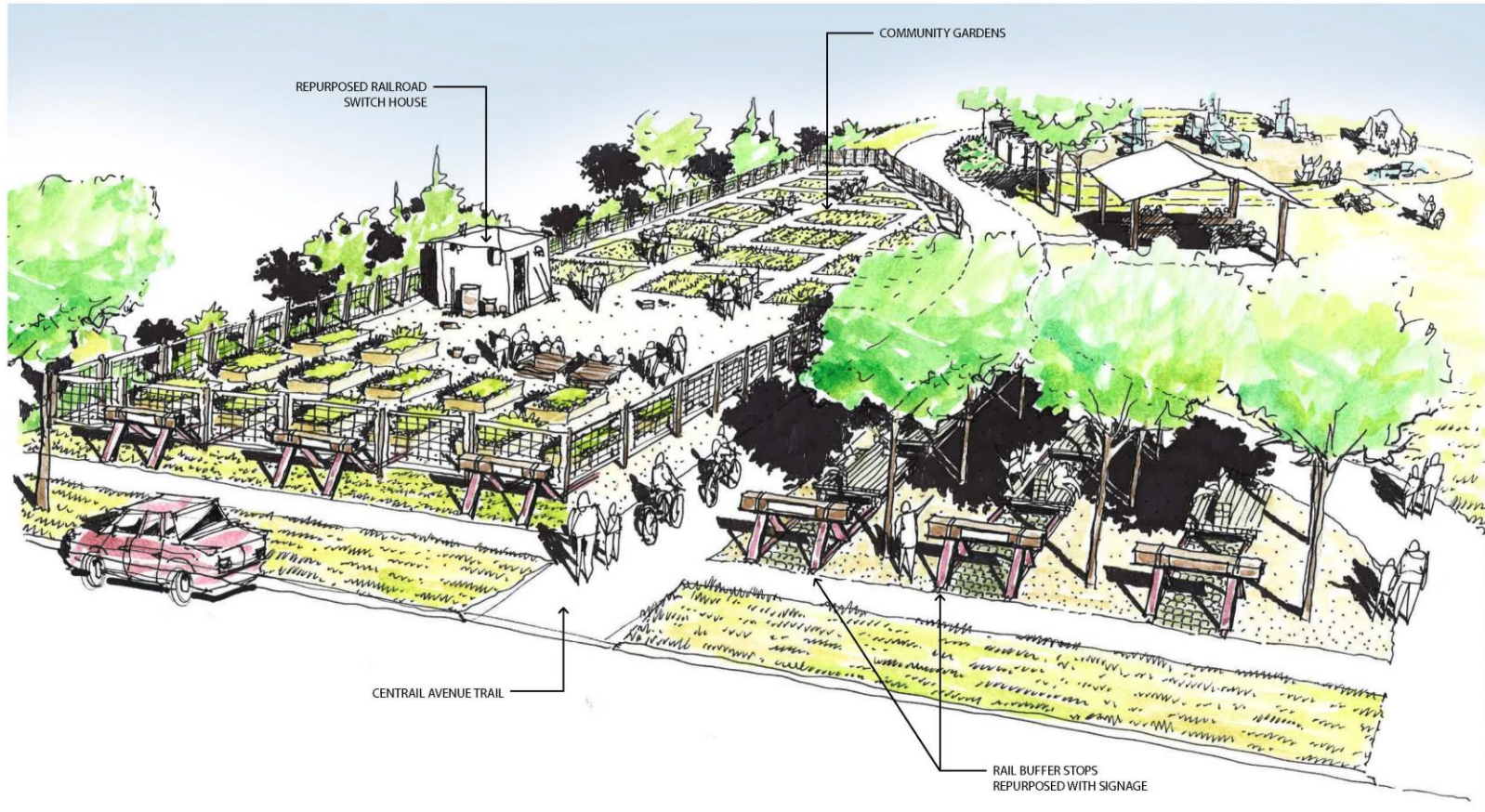
7. RAIL CROSSING SIGNAL WITH LIGHTS



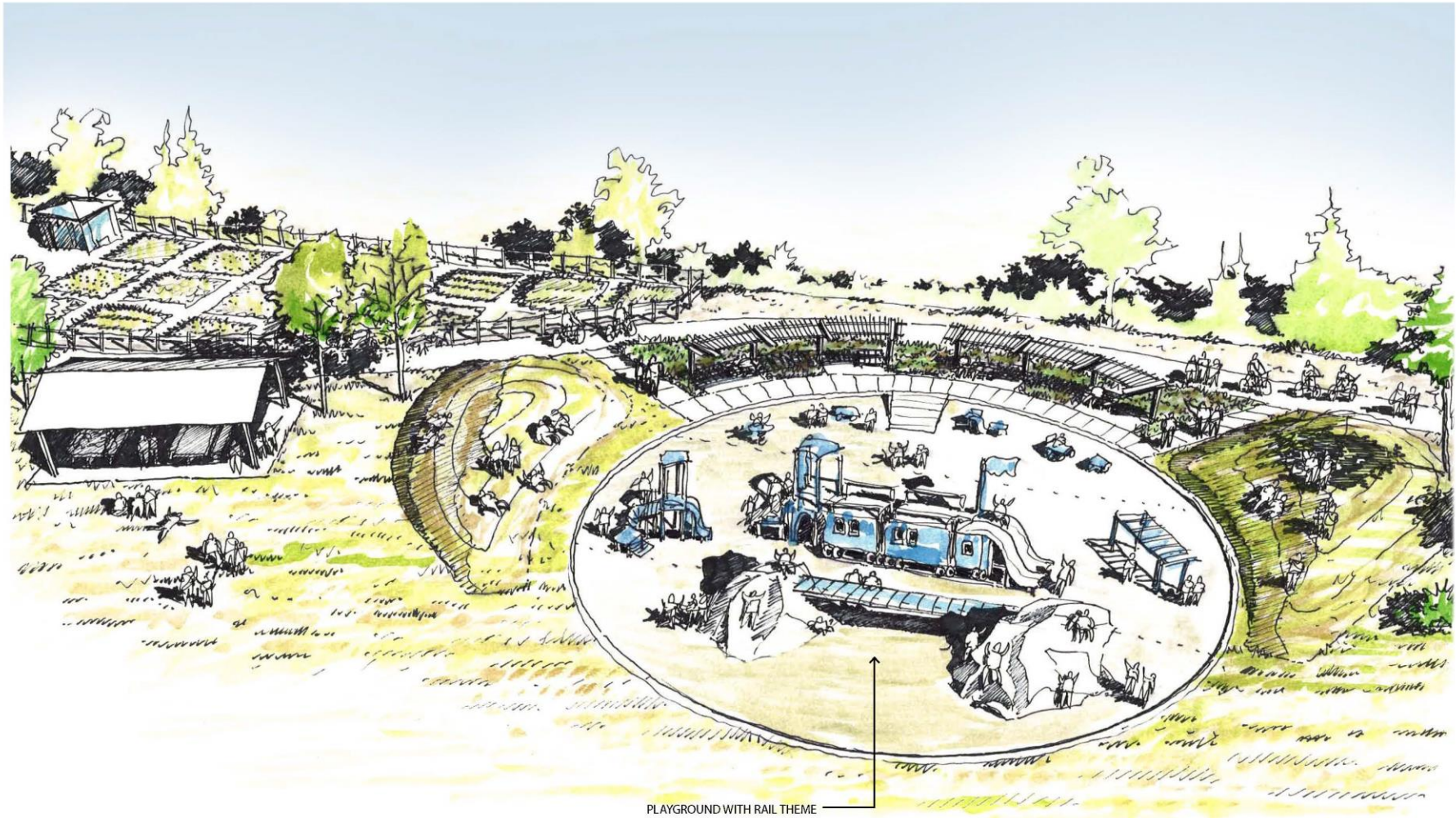
9. WHEEL SETS (X3)



6. CANTILEVERED SIGNAL TRUSS







PLAYGROUND WITH RAIL THEME

