

Missoula's Newest Parking Structure! Park Place

A City of Missoula Public Art Project 2012

RESERVATION RIGHTS

The Missoula Public Art Committee is designated to review, advocate and develop public art projects in the City of Missoula. Since 1985, it has strived to develop a formal structure in which to create, develop and maintain public art as well as further public accessibility to the arts.

The City of Missoula Public Art Committee reserves the right at any time to supplement, amend or otherwise modify this solicitation and to request additional or supplemental information or proposals from any or all participating artists. In addition, the City reserves the right to accept or reject, at any time prior to the commissioning of a work, any or all proposals or any part thereof submitted in connection with this solicitation; to waive any defect or technicality; and to advertise for new proposals where the acceptance, rejection waiver, or advertisement would be in the best interests of the City. The City also reserves the right to negotiate unacceptable provisions incorporated within an otherwise acceptable proposal. A proposal which is incomplete, unclear, conditional or which contains irregularities of any kind, may be rejected without evaluation.

Failure to comply with proposal requirements described in the prospectus will constitute an invalid application.

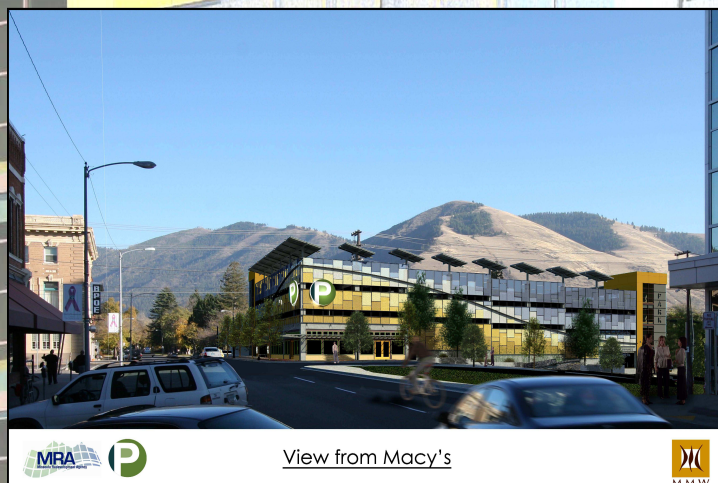
INFORMATION/QUESTIONS

Questions related to this proposal may be directed to:

Joan Jonkel, Chair
Tel: (406) 728-0435
Email: jonkel@bigsky.net
Subject: Park Place Parking Structure

The City of Missoula Public Art Committee invites you to submit a design proposal for a public art piece at **PARK PLACE PARKING STRUCTURE, Missoula, Montana.**

This is an open invitation to artists in Montana, Wyoming, Idaho, Washington, and Oregon.



THE CITY OF MISSOULA PUBLIC ART COMMITTEE

Established in 1985 and reaffirmed in 2002, the City of Missoula Public Art Committee endeavors to develop a collection of public art that is of the highest quality, that encompasses a broad aesthetic range reflecting the City and the minds of its citizens, improves the quality of life in the area, accessible to all individuals, and is a source of pride to all residents.

The Committee reviews permanent works of art proposed on, in, or over City owned property. *To that end, the Committee is honored to request your participation in this invitation.*

Public art serves as a visual landmark within the built environment and, most importantly, an expression of our community. Public art provides an important service to all Missoulians and visitors as a means to appreciate artwork outside the traditional museum or gallery setting and within the public realm. Missoula's Percent for Art Projects are site specific, legacy works that engage a variety of media—mosaic, painting, glass, sculpture, and works that integrate landscape, infrastructure, and architecture.

This commission challenges artists to reflect the diversity of the Missoula community, and integrate and enhance the site and public space.

LOCATION

Park Place, Missoula's newest Parking structure is located at 200 E. Front (southeast corner of Front St. and Patte St), in Missoula, Montana.

Scheduled for completion in Fall, 2012, Park Place is located in the heart of downtown, near the Missoula riverfront. The street level features commercial space with four floors of parking above.

PROJECT GOALS

Park Place initiates the visual landmark linking - if not drawing - individuals from the downtown community to Missoula's vibrant river front System.

The artwork to be selected will be a major public art commission, therefore the City of Missoula Public Art Committee expects that it be of the highest quality in both concept and execution, while recognizing public safety and durability.

The Committee encourages proposals that balance the artistic design in the artwork with the setting of the designated area. While traditional forms of artwork are the norm, the Committee is open to all forms of visual artistic expression, including digital, light, and interactive media, or an actively vibrant night piece.

Additionally, the work should:

- Challenge the concept that public art is viewed and experienced only during daylight hours;
- Enhance the growing connection between downtown and the riverfront;
- Invoke in the piece an idea of playfulness and interaction community life, livability, history, pride and identity

When developing proposals, artists may wish to consider the architect's statement, the design aesthetics of the building and the traffic flow and use of the building and site. Artists should also delineate any special environmental factors to be considered. Please note, this commission has no budget for maintenance and must therefore be sustainable, durable, and able to weather and/or adapt over time.

ARTWORK OPTIONS

The Committee is willing to consider two (2) possibilities:

1. A detailed proposal for a new work designed by the artist that meets the stated project goals;
2. A proposal for the purchase of an existing artwork that also fully meets the stated project goals.

COMPETITION SPECIFICATIONS

Execution: All proposals for new works must include a scaled, detailed, color rendition drawings, model, digital images, or etc.) that is clearly indicative of the final artwork. All proposals for existing works must include details of size, weight, materials, installation requirements, and a discussion of appropriateness for the space.

Materials: All durable exterior materials (paint, ceramic, metal, etc.) will be considered, however, maintenance free work with precautions against vandalism is preferred. The piece should be structurally sound and designed in concert with advice from a structural engineer to mitigate liability for the City of Missoula, if needed.

Award: *The total budget for this public art project is \$53,000 available for the design, execution and installation of the winning concept.*

Deadline: Project submission deadline for all materials is **Wednesday, May 30, 2012.**

Process: The Selection Committee will make their decision of **finalists by Wednesday, June 6, 2012.** Personal interviews with the Selection Committee will be scheduled for **Wednesday, July 11, 2012.** (NOTE: If the artist chooses to travel to Missoula for a presentation, the Missoula Public Art Committee will not assume costs related to such travel.) *Finalists must submit a scale model of their Proposal at the time of interviews to receive the commission.*

The winning artist will be chosen by on or before Wednesday, July 18, 2012. All participants will be notified of the selection in writing. A standard public art Contract will be executed thereafter between the artist and the City of Missoula. The proposed completion date for the Park Place Parking Structure is mid-August, 2012. If the artwork chosen is a completed piece, installation would coincide with the completion of Park Place construction. If the chosen artwork is not in existence, the Selection Committee will work with the artist on a completion date.

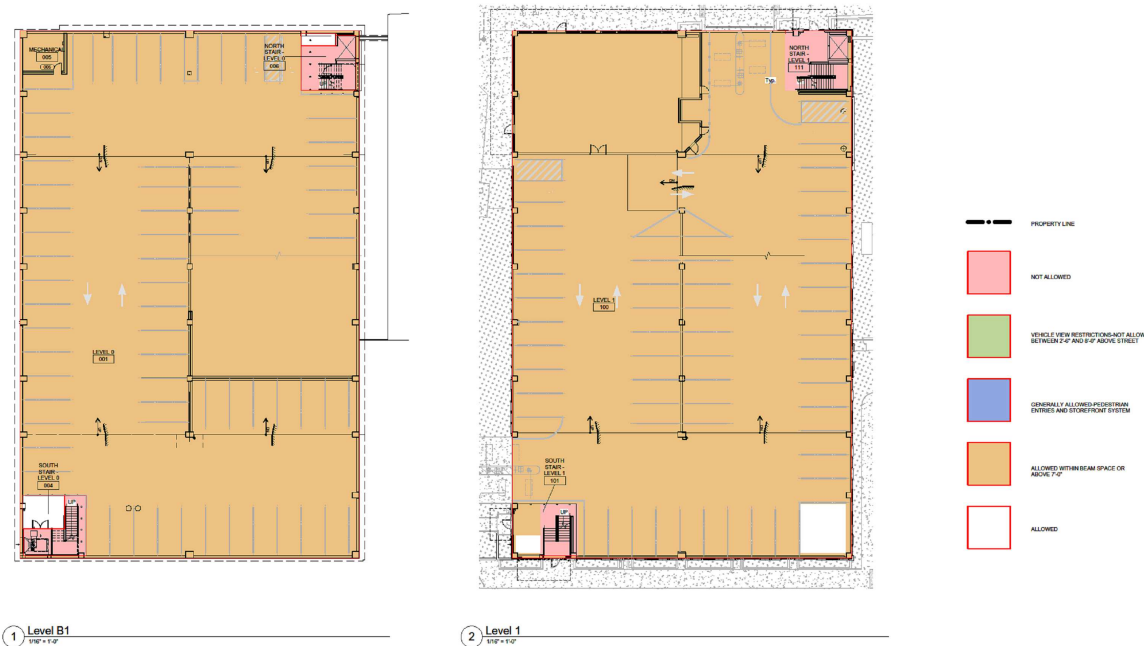
SELECTION COMMITTEE

The Selection Committee will include members of The City of Missoula Public Art Committee and a representative from each of the following: the Missoula Parking Commission, the Missoula Redevelopment Agency, MacArthur, Means & Wells Architects, P.C., the Missoula Downtown Association, the Missoula Business Improvement District, the Holiday Inn Downtown at the Park, the Trail Head, 1st Interstate Bank, The Market on Front and the Heart of Missoula Neighborhood Council.

APPLICATION INFORMATION

To be considered, artists must submit the following information electronically (.pdf format) via email or in person. **Submission paperwork may be emailed to: kameomt@yahoo.com (Kathi Olson, Missoula Public Art Committee).** **Subject: Park Place Parking Structure Project.** CD's of your information may also be mailed/delivered to: Joan Jonkel, Chair, Missoula Public Art Committee, Mayor's Office, 435 Ryman, Missoula, MT 59802.

1. **Proposal Description / Project Description** (attached - **limited to two (2) pages** - 8-1/2" x 11") explaining concept and design and how artist proposes to approach this project.
2. **Artists must submit ten(10) images illustrating examples of your best works (.pdf format, one file please).** Imagery shall demonstrate experience with public art commissions. If Artist is presenting proposals that include existing artwork, he/she must **ALSO** furnish images that fully display the work from various angles. Each example must be clearly identified with the artist's name, title of work, size, installation location if appropriate, and numbered to correspond with an attached annotated list (See attached Application). **DO NOT provide website addresses or links directing the Selection Committee to examples of your work. It is the responsibility of each Artist to select the ten (10) works which best illustrate his/her abilities.**
3. **Current resume** detailing your experience as an artist and any past public art projects (please, no more than three pages). NOTE: Additional support materials may be submitted that relate to the artist's past public art experience.
4. **Professional References:** Please list **two (2) professionals who can speak to your public art Experience (See attached Application).**



ARCHITECT'S STATEMENT

The Park Place design is based on the following vision statements:

- Make a building that is pedestrian friendly and that reinforces the urban fabric of downtown Missoula.
- Make a building that responds aesthetically and programmatically to the current needs of the City and the Missoula Downtown Master Plan. The Master Plan shows the structure serving both the "Retail Hotspot" extending along Front Street and the future Cultural District to the east of the site. The site also is a gateway to the river front and the structure may allow future removal of surface parking along the important trails that front the Clark Fork.
- Make a building demonstrating leadership in stewardship of resources - both energy and materials.
- Make a building that recognizes that parking is only a part of the transportation network critical to the success of Missoula. It should support alternative modes of transportation and demand management practices.
- Create a new "brand" for the Missoula Parking Commission that is, "fresh, urban and progressive."
- Design a building that is of our time and place and that connects to the particular landscape of Missoula.

The skin covering the parking portion of the building is perforated anodized aluminum panels. The panels are approximately 50% open and are set off the building in varying amounts between zero and four inches. There are 8 colors of panel – the colors below the swooping metal line that splits the façade relate to the colors of dried grasses on the hillsides surrounding Missoula. The colors above the swoop relate to the sky. The panels generally are gradated from ground to swoop with darkest "grass" colors near the ground. The colors get lighter toward the swoop where they are neutral and then get darker toward the sky. The panels are in a mosaic rather than evenly gradated.

At eye-height within the structure there are 2'6" wide view slots that have no panels to allow unobstructed views to the surrounding hills. Native planting of the landscaped areas further link the building to the surrounding hillsides.

The project includes new pedestrian walkways against the Holiday Inn parking lot that connects across Pattee to the Bank Street public plaza and fountain.

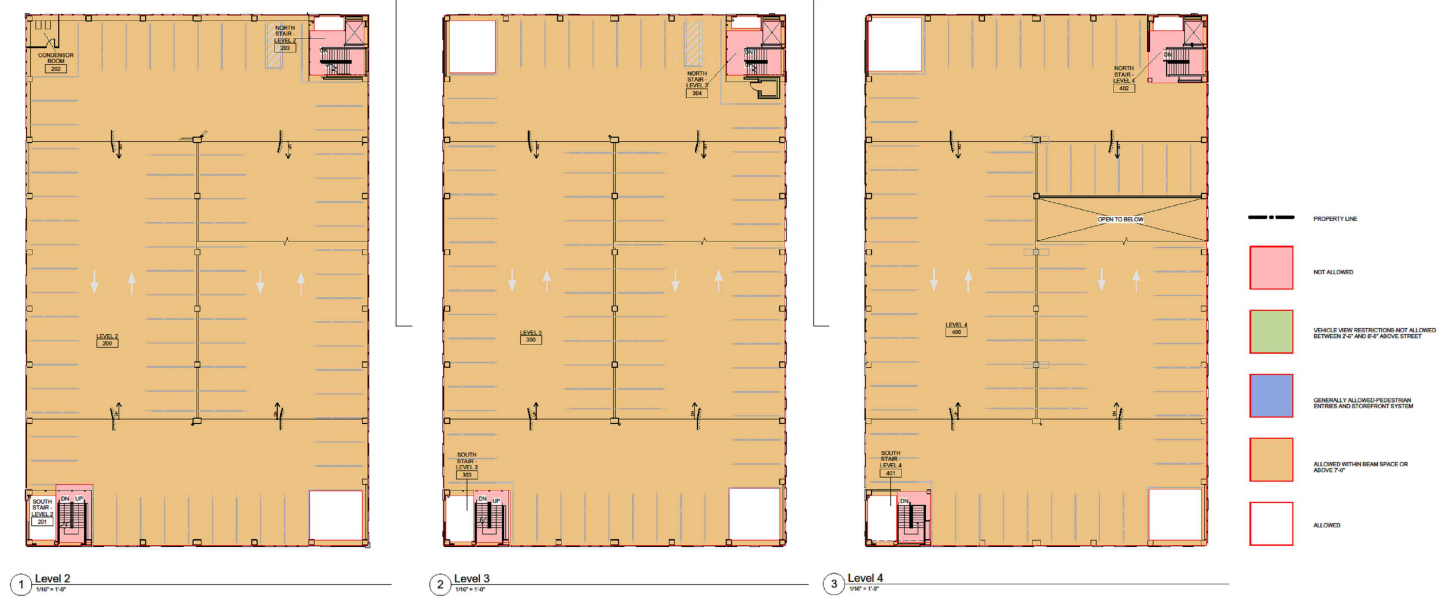
A new bus stop pullout is part of the project and there are plans for a bike maintenance kiosk within the building. Car sharing programs could be housed within the structure to reduce need for parking downtown.

Parking Signs are prominently incorporated in the façade design and help identify the structure and its use for the visitor.

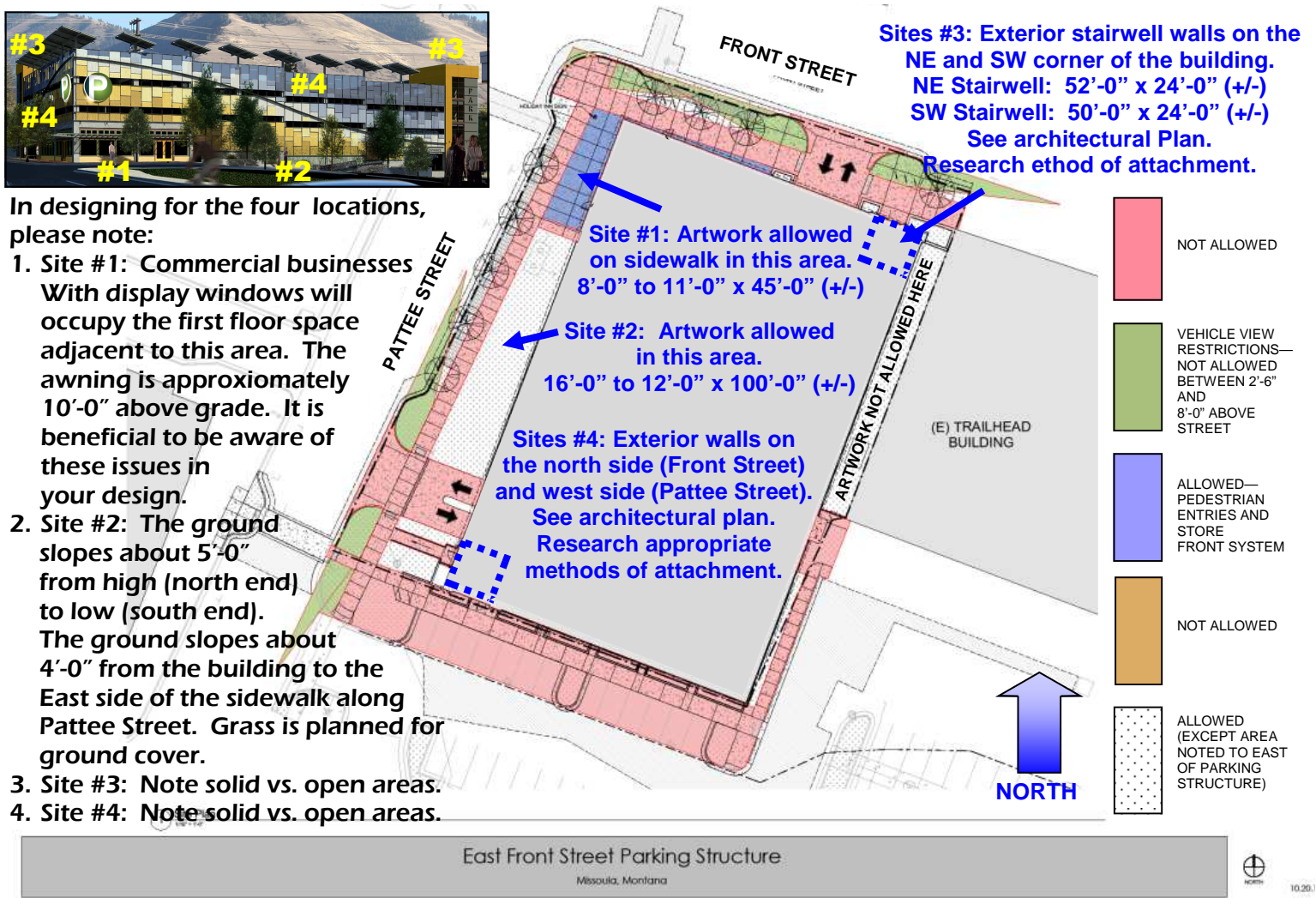
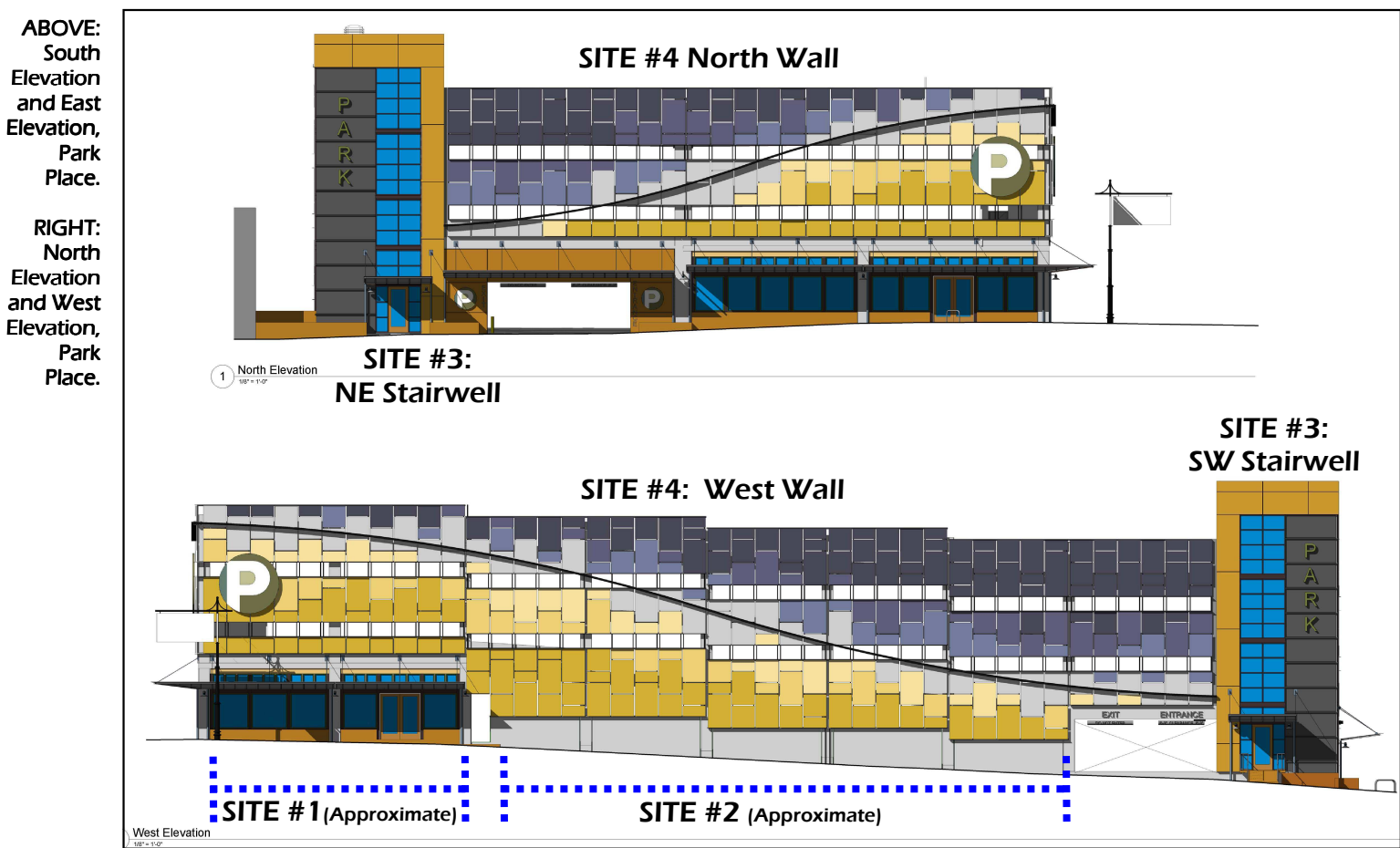
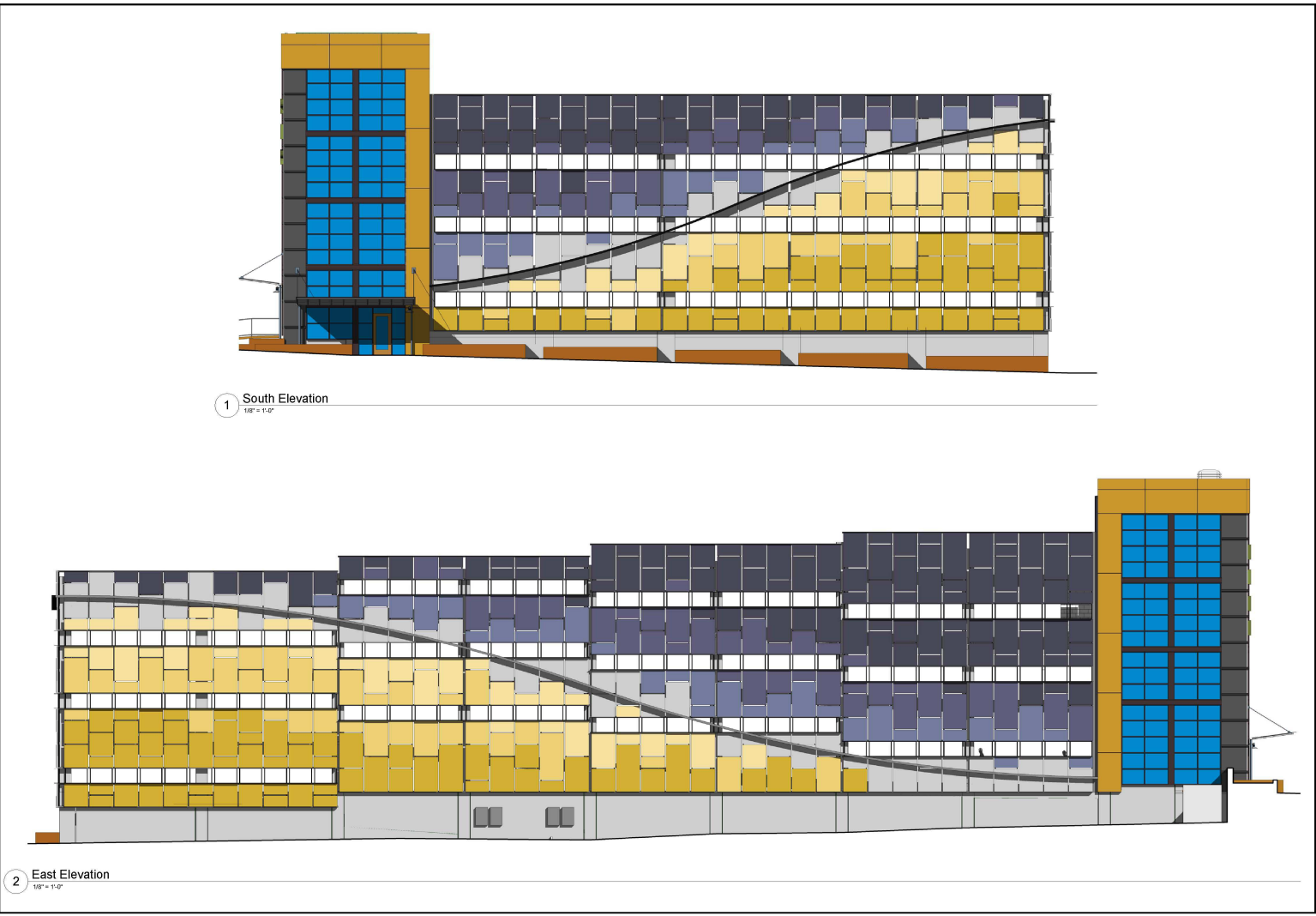
The building is projected to use 60% less energy than a typical parking structure with most of the gains achieved through lighting efficiency and state of the art lighting controls. A 50 kW photo voltaic array is planned for the roof of the building and the panels form the cornice in the attached renderings. Infrastructure for electric car charging receptacles is included in the building so that energy from the roof mounted panels could power a parker's commute. Funding for the photovoltaic array is uncertain at this point.

Luke Jackson, Associate
McArthur, Means and Wells Architects, P.C.

East Front Street Parking Structure
Missoula, Montana
10.20.11



East Front Street Parking Structure
Missoula, Montana
10.20.11



TIMELINE

- Wednesday, May 30, 2012**
Proposals are to be received by the City of Missoula Public Art Committee no later than 5:00 p.m.
- Wednesday, June 6, 2012**
The City of Missoula Public Art Committee will announce finalists.
- Wednesday, July 11, 2012**
The Selection Committee will interview finalists. Finalists must provide scale model for interview.
- On or before Wednesday, July 18, 2012**
The City of Missoula Public Art Committee will award the commission.
- August, 2012**
Preferred deadline for installation. The exact date will be scheduled between the artist, the Missoula Public Art Committee Chair and a City of Missoula representative (preferably to coincide with the completion of Park Place construction).

THE PROJECT: SITE SPECIFICATION

(See cover photo and accompanying photos / illustrations.)

This project involves the direct commission of artwork for Park Place, 200 E. Front, Missoula, Montana. There are four opportunities for artwork locations, All are highly visible, outdoor locations (above).

Please note:

- Artwork must be located within the designated spaces (areas in noted above).
- The measurements of each designated area are noted adjacent to the area. Artists are not expected to design a piece that completely occupies all available space.
- The artwork may be two- or three-dimensional, static or kinetic.

Note: The artwork cannot block or impede traffic on the sidewalk adjacent to Front Street or Pattee Street, the entrance of Park Place Parking Structure, nor the business display windows on the northwest corner area at street level.

